



## trivum RP010

Article-Number: 300010

EAN: 4260393850118

trivum REG audio actuators are flexible music systems for DIN rail mounting. All models can be combined with one another and are already ready a few minutes after installation.

Various music streaming services\* as well as AirPlay can serve as music sources. Furthermore, audio files can be played from a NAS. All REG audio actuators support for this various audio formats with a sampling rate up to 96 kHz.

The trivum RP010 features a Line-Out port for audio output and a Volume Out interface for driving an external amplifier (e.g. trivum RA410).

It is controlled by other components of trivum CONTROL series, a web browser or via KNX.

\* Requires a paid subscription of the service provider.



### Easy configuration

The configuration can be made via any browser-enabled end device – without any installation or further software.



### Streaming

The built-in streaming client allows you to play internet radio and music streams, as well as your own music collection via AirPlay or from a NAS.



### Formats

The REG devices support the most popular audio formats like MP3, AAC, ALAC, Flac, and WMA.



### Custom sound

The audio actuator features a bass and treble controls for individual sound adjustments.



### KNX

All REG models can be completely integrated into a KNX installation via KNX/IP router. Both control commands and status messages can be transmitted/received.



### Visualization

Integration in the visualization of Jung FAP, Hager Domovea and Gira HomeServer.





### Function

Audioactuator for DIN rail mounting for playback of streaming sources.

### Case

Material	ABS plastic
Color	grey
Width	3 TE (53 mm)
Total weight	120 g
Mounting	DIN rail

### Playback

Streaming	NAS, Tuneln, AirPlay, internet streaming services <sup>1</sup>
Radio	-
External sources	-
Audio files	MP3, AAC, ALAC, Flac, WMA
Sample rate	up to 96 kHz

### Connections

Ethernet	RJ-45 (x1)
Radio	-
Line-In (analog) (unbalanced)	-
Line-In (analog) (balanced)	-
Line-Out (analog)	4-pin terminal block (x1)
Volume Control	2-pin terminal block (x1)
Speaker	-

### Amplifier

Typ	-
Music power (total)	-
Music power (per channel)	-
Impedance	-
Operating temperature	-20...+50 °C

### Power supply

Input voltage	24 V DC
Input current	150 mA
Max. power consumption	3.5 W
Stand-by power	< 2.5 W
Power supply	not included in the scope of delivery
Connector	2-pin terminal block (x1)

### Controls

trivum iPhone App, trivum TouchPad, KNX, web browser

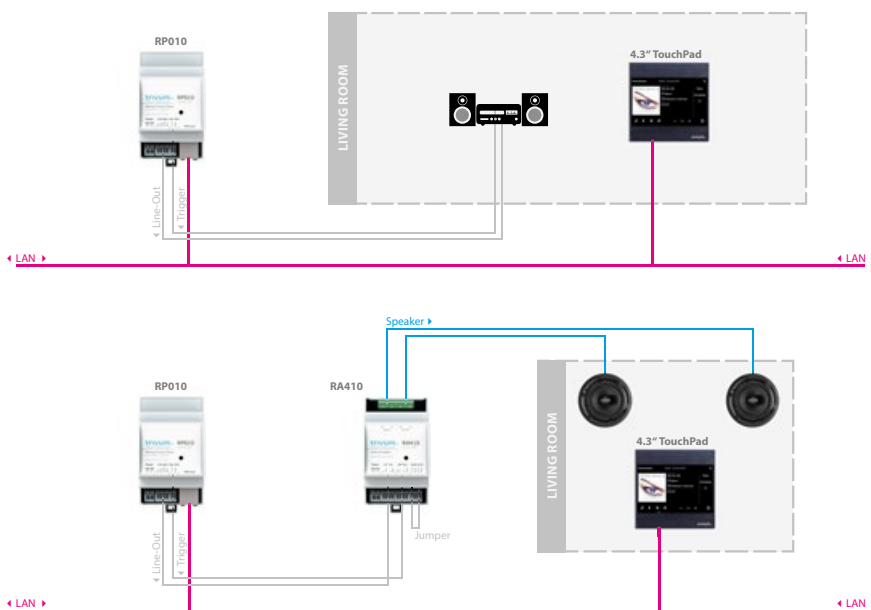
### Configuration

Tool	web browser Safari, Firefox, Chrome
Sound control	balance, treble, bass

### KNX<sup>2</sup>

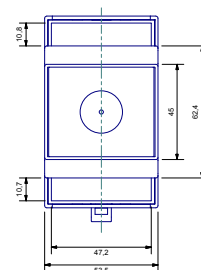
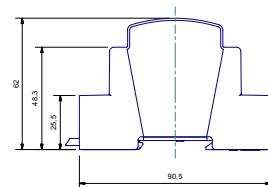
Functions	zone status, source, volume, text information, source control, actions
Visualization	Support for Gira HomeServer, Hager Domovea, Jung FAP
Connection	via KNX/IP router

### Connection examples



### Dimensions

All measurements are given in millimeter (mm).



<sup>1</sup> please find our current list of supported online music services on [www.trivum.de](http://www.trivum.de)

<sup>2</sup> KNX is not required to use the main functions of the RP010.

